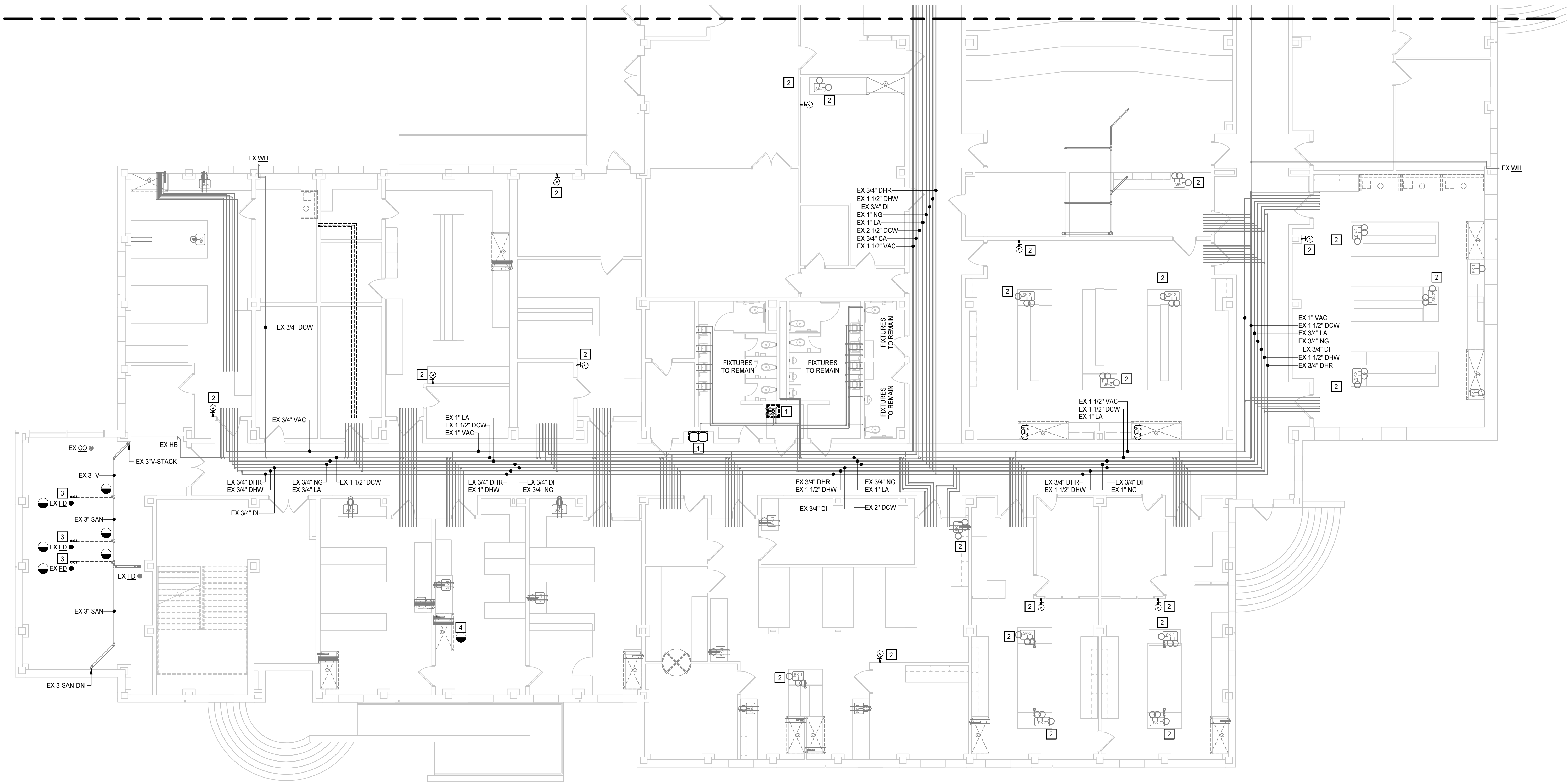
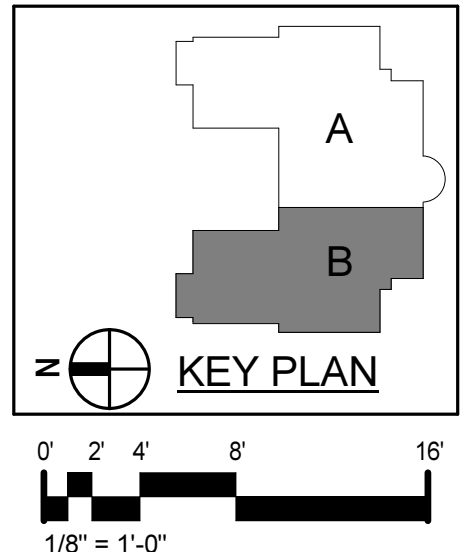
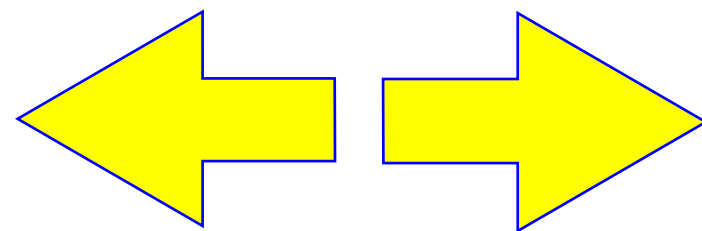


3/27/2019 12:08:33 PM



FIRST FLOOR PLAN - AREA B - DEMOLITION

1/8" = 1'-0"



FIRST FLOOR PLAN
- AREA B -
DEMOLITION

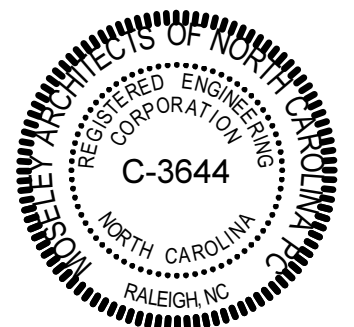
P1.1.B

KEYNOTES

APPLIES TO DRAWINGS P1.1.B
REPRESENTED BY [n]

1. REMOVE EXISTING PLUMBING FIXTURE COMPLETE BACK TO WALL AND PREPARE EXISTING UTILITIES FOR NEW CONNECTION.
2. REMOVE EXISTING EMERGENCY FIXTURE COMPLETE AND PREPARE EXISTING UTILITIES FOR NEW CONNECTION.
3. REMOVE EXISTING FLOOR DRAIN COMPLETE BACK TO POINT INDICATED AND CAP EXISTING BRANCH. PATCH AND REPAIR FLOOR.
4. REMOVE EXISTING TRAP AND UTILITIES BACK TO WALL AND PREPARE FOR NEW CONNECTION ON OPPOSITE SIDE OF WALL.

PROGRESS
PRINT, NOT FOR
CONSTRUCTION



Dobo Hall Renovation - Package A

SCO PROJECT NO. 18-19798-01A

UNC Wilmington

4978 CAHILL DR, WILMINGTON, NC 28403

PROJECT NO. 580999 DATE MARCH 27, 2019

REVISIONS

DATE DESCRIPTION